

# **2011 PAN-AMERICAN GAMES REGATTA**

**Puerto Vallarta, Jalisco, México**

**October 13<sup>th</sup>-23<sup>rd</sup>, 2011**

Organizing Authority:

**GUADALAJARA 2011 Pan-American Games Organizing Committee (COPAG), and the Mexican Sailing Federation (FMV), in collaboration with the Pan American Sailing Federation (PASAF), and the Vallarta Yacht Club (VYC), as the hosting venue.**

## **SAILING INSTRUCTIONS**

### **RULES**

1.1 The regatta will be governed by the rules as defined in *The Racing Rules of Sailing*. The Pan-American Games Regulation, PASO Statute, XVI Pan-American Games Guadalajara 2011 Entries Manual and XVI Pan-American Games Guadalajara 2011 Technical Manual for Sailing are included in the list of documents governing this event.

1.2 No national authority prescriptions will apply.

1.3 Decisions of the International Jury will be final as provided in RRS 70.5.

1.4 The RRS Appendix P, Special Procedures for Rule 42, will apply.

1.5 For the Open Multihull, RRS 44.1 and RRS P2.1 are changed so that the Two-Turns Penalty is replaced by the One-Turn Penalty.

1.6 For medal races, ISAF Addendum Q, Umpired Fleet Racing, will apply and takes precedence over any conflicting instructions.

1.7 Class rules will apply except for any class rule dealing with the conditions for organizing and running of Class Championships.

1.8 The Equipment Inspection Regulations will apply.

1.9 Coach boats regulation Pan-American Games 2011 will apply.

1.10 RRS G3, Chartered or Loaned Boats, will apply.

1.11 For the Open Keelboat, the boats shall sail with a crew of four persons on board, with a maximum total crew weight of 320Kg. The boats shall sail with one mainsail, one jib and one spinnaker that comply with J-24 class rules. The boats shall compete at the class standard weight of not less than 1270 kg, including the empty hull and the spars, lines and fittings specified in class rule 3.7.1. In addition, the boats shall carry life jackets for all crew members, and one anchor with or without chain, and rope as specified in class rule 4.1.8. Sails, the anchor and attachments and life jackets are not included in the class standard weight. No genoa, engine, gas tank or cushions shall be carried. This changes the J-24 class rules. In other respects the boat shall comply with current J-24 class rules.

1.12 If there is conflict between languages, the language in which the relevant document was originally written will prevail.

1.13 RRS 63.7 is changed to read: "If there is a conflict between rules that needs to be resolved before the International Jury can decide a *protest* or request for redress, the Jury shall apply the rule that it believes will provide the fairest result for all boats affected.

1.14 The words "race committee" are replaced by "race committee and equipment inspection committee" in RRS 60.2.

## **IDENTIFICATION AND ADVERTISING WHILE RACING**

2.1 Each day while racing, the first, second and third boats in series scores at the beginning of the day shall respectively display yellow, blue and red stickers on their mainsails throughout the day. The organizing authority will supply the stickers and instructions for their use at the team leaders' meeting.

2.2 Every boat shall carry on her mainsail her national flag provided by the Organizing Authority

2.3 Boats and sailboards may be required to display event sponsor advertisement.

2.4 A boat's recall number will be her national letters. This changes RRS 30.3.

2.5 For the purpose of scoring, only national letters will be used. The use of sail numbers is optional. When sail numbers are used, Class Rules should be followed. This changes RRS G1.1.

## **CAMERAS AND ELECTRONIC EQUIPMENT**

3.1 Boats may be required to carry cameras, sound equipment or positioning equipment as specified by the organizing authority.

## **NOTICES TO COMPETITORS**

4.1 Notices to competitors will be posted on the official notice board located directly in front of the Results Office (OVR), on the eastern side of the Tonina Tower of the Paradise Village resort

## **CHANGES TO SAILING INSTRUCTIONS**

5.1 Any change to the sailing instructions will be posted before 10:00 on the day it will take effect, except that any change to the schedule of races will be posted by 20:00 on the day before it will take effect.

## **SIGNALS MADE ASHORE**

6.1 Signals made ashore for classes assigned to racing areas Bravo and Charlie will be displayed at the mast outside the Vallarta Yacht Club clubhouse. When a signal is displayed over an area flag it applies to that area only.

6.2 Signals made ashore for classes assigned to racing area Alpha will be displayed at the mast located at the beach compound in front of the breakwater.

6.3 When flag AP is displayed ashore, '1 minute' is replaced with 'not less than 40 minutes' for racing areas Alpha and Bravo, and with 'not less than 60 minutes' for racing area Charlie in the race signal AP.

6.4 When flag Y is displayed ashore, rule 40.1 applies at all times while afloat. This changes the Part 4 preamble.

## **FORMAT OF RACING**

7.1 The regatta will consist of an opening series and a medal race.

7.2 The five boats ranked highest in the opening series will be assigned to compete in the medal race.

7.3 Assignments to the medal race will be based on the ranking available at 08:00 on the day of the medal race. The jury may extend this time limit.

## **SCHEDULE OF RACES**

8.1 Dates of racing:

16	Sun	Practice Race
17	Mon	Races
18	Tue	Races
19	Wed	Races
20	Thu	Spare Day
21	Fri	Races
22	Sat	Races
23	Sun	Medal Races

8.2 Eleven races are scheduled for each event. Out of these number, ten are scheduled as opening-series races and one as a medal race.

8.3 Two races per day are schedule for each event.

8.4 One extra race per day may be sailed, provided that no class becomes more than one race ahead of schedule and the change is made according to instruction 5.1.

8.5 The scheduled time for the warning signal for the first race each day is 13:00.

8.6 There will be no starting signal after 17:00 on Sunday October 23<sup>rd</sup>, 2011.

8.7 To alert boats that a race or sequence of races will begin soon, the orange flag defining the starboard end of the starting line will be displayed, with one sound signal, for at least four minutes before a warning signal is displayed.

8.8 If less than six races have been sailed, the spare day will be used to try to complete six races.

8.9 Medal Race: A medal race will be scheduled for each class with three or more opening-series races completed.

## **EVENT FLAGS**

9.1 Events and event flags will be as follows:

<b>Event</b>	<b>Class</b>	<b>Flag</b>
Men's Windsurfer	RS:X	Class ensign on white background
Women's Windsurfer	RS:X	Class ensign on light-blue background
Men's One-Person Dinghy	Laser	Class ensign on white background
Women's One-Person Dinghy	Laser Radial	Class ensign on light-blue background
Open One-Person Dinghy	Sunfish	Class ensign on white background
Open Two-Person Dinghy	Snipe	Class ensign on white background
Open Three-Person Dinghy	Lightning	Class ensign on white background
Open Multihull	Hobie 16	Class ensign on white background
Open Keelboat	J-24	Class ensign on white background

## **RACING AREAS**

10.1 Attachment A shows the location of racing areas and the flags used to designate them.

10.2 Classes are assigned to racing areas as follows:

<b>Event</b>	<b>Class</b>	<b>AREA</b>
Men's Windsurfer	RS:X	Area Alpha
Women's Windsurfer	RS:X	
Open Multihull	Hobie 16	
Men's One-Person Dinghy	Laser	Area Bravo
Women's One-Person Dinghy	Laser Radial	
Open One-Person Dinghy	Sunfish	
Open Two-Person Dinghy	Snipe	Area Charlie
Open Three-Person Dinghy	Lightning	
Open Keelboat	J-24	

10.3 The race committee may reassign an event to any racing area, but not later than 3 hours before the scheduled warning signal. However, when flag AP is displayed ashore (see instruction 6.3) racing areas may be reassigned up to 15 minutes before AP is removed.

10.4 For the medal races, 1, 2 or 3 racing areas may be used. Their locations will be posted on the official notice board.

## **THE COURSES**

11.1 The diagrams in Attachment B show the courses, including course signals, approximate angles between legs, the order in which marks are to be passed, and the side on which each mark is to be left.

11.2 No later than the warning signal, the race committee signal boat will display the course signal and, except for boards, the approximate compass bearing to the first mark.

11.3 In the course diagrams, Mark 3 is shown as a gate, 3s and 3p, and Mark 4 is shown as a gate, 4s and 4p. One or both gates may be replaced by single marks, Mark 3 and Mark 4 respectively, to be left to port.

## **MARKS**

12.1 (a) Marks 1, 2, 3, 3s, 3p, 4, 4s and 4p will be tetrahedral inflatable buoys. With the exceptions for the Open Keelboat and Open Multihull events stated below, the colour of the marks for each course will be as follows:

<b>Racing area</b>	<b>Mark colour</b>
Alpha	yellow
Bravo	orange
Charlie	green

For the Open Keelboat event, Mark 1 will be yellow.

For the Open Multihull event, Mark 1a will be green.

(b) Marks S1, S2 and S3 will be white inflatable tetrahedral buoys.

(c) Mark 1a will be a white inflatable tetrahedral buoy.

12.2 New marks, as provided by instruction 14.1, will be the same shape and colour as the original marks.

12.3 The starting marks will be the race committee signal boat at the starboard end and another race committee boat at the port end. Both boats will display orange flags.

12.4 The finishing line marks will be race committee vessels or white inflatable tetrahedral buoys.

## **THE START**

13.1 The starting line will be between staffs on the starting marks displaying orange flags.

13.2 Boats whose warning signal has not been made shall avoid the starting area after the warning signal for a different event has been displayed. The starting area is defined as a rectangle 100 meters extending from the starting line and marks in all directions.

13.3 A boat starting later than four minutes after her starting signal will be scored Did Not Start without a hearing. This changes RRS A4 and A5.

## **CHANGE OF THE NEXT LEG OF THE COURSE**

14.1 To change the next leg of the course, the race committee will lay a new mark (or move the finishing line) and remove the original mark as soon as practicable.

## **THE FINISH**

15.1 The finishing line will be between a staff on the race committee vessel displaying an orange flag and either a staff on another race committee vessel displaying an orange flag or a white tetrahedral inflatable buoy.

## TIME LIMITS AND TARGET TIMES

16.1 Except for medal races, time limits and target times are as follows:

Event	Time Limit	Mark 1 Time Limit	Finish Window	Target Time
Men's Windsurfer, Women's Windsurfer	50 min	15 min	15 min	30 min
Men's One-Person Dinghy, Women's One-Person Dingy, Open One-Person Dinghy, Open Two-Person Dinghy	90 min	30 min	20 min	60 min
Open Multihull	90 min	30 min	20 min	60 min
Open Three-Person Dinghy, Open Keelboat	120 min	40 min	20 min	75 min

16.2 Time limits and target times for medal races are as follows:

Event	Time Limit	Mark 1 Time Limit	Finish Window	Target Time
Men's Windsurfer, Women's Windsurfer	50 min	15 min	10 min	20 min
All other events	50 min	30 min	10 min	30 min

16.3 If no boat has passed Mark 1 within the Mark 1 Time Limit the race will be abandoned. Failure to meet the target time will not be grounds for redress. This changes RRS 62.1(a).

16.4 Boats failing to finish within the Finish Window after the first boat sails the course and finishes will be scored Did Not Finish without a hearing. This changes RRS 35, A4 and A5.

## PROTESTS AND REQUESTS FOR REDRESS

17.1 Protest forms will be available at the race office, located at the Convention Centre of the Paradise Village resort. Protests and requests for redress or reopening shall be delivered there within the appropriate time limit.

17.2 For each event, the protest time limit is 90 minutes after the last boat has finished the last race of the day.

17.3 Notices will be posted within 30 minutes of the protest time limit to inform competitors of hearings in which they are parties or named as witnesses. Hearings will be held in the protest room, located at the south-eastern corner of the Tonina Tower of the Paradise Village resort, beginning at the time posted. Hearings may be scheduled to begin up to 30 minutes before the protest time limit.

17.4 Notices of protests by the race committee, the equipment inspection committee or the jury will be posted to inform boats under rule 61.1(b).

17.5 A list of boats that have been penalized under Appendix P for breaking RRS 42 will be posted.

17.6 Breaches of instructions 2, 20, 30, Equipment Inspection Regulations and Coach Boats Regulations will not be grounds for a protest by a boat. This changes RRS 60.1(a).

17.7 Penalties for breaches of instructions 2, 3, 13.2, 20, 21, 23, 24, 25, 26, 27, 28, 30 and 32, or for breaches of RRS 41, or Class Rules, Equipment Inspection Regulations and Coach Boat Regulations are at the discretion of the jury.

17.8 On the last day of the opening series a request for reopening a hearing shall be delivered:

(a) within the protest time limit if the requesting party was informed of the decision on the previous day;

(b) no later than 30 minutes after the requesting party was informed of the decision on that day.

This changes RRS 66.

17.9 On the last day of the opening series a request for redress from a jury decision shall be delivered no later than 30 minutes after the decision was posted. This changes RRS 62.2.

## **SCORING**

18.1 The Low Point System of RRS Appendix A will apply. RRS B8 is deleted.

18.2 Three races are required to be completed to constitute a regatta.

18.3 When fewer than ten opening-series races have been completed, a boat's series score will be the total of her race scores.

18.4 When ten opening-series races have been completed, a boat's series score will be the total of her race scores excluding her worst score. However, the score from the medal race will not be excluded.

18.5 The scoring abbreviation for a discretionary penalty imposed under SI 17.7 will be DPI. This adds to RRS A11.

18.6 To request correction of an alleged error in posted race or series results, a boat may complete a scoring enquiry form available at the regatta office.

## **MEDAL RACES**

19.1 The boats assigned to compete in a medal race will be ranked highest in the regatta except for a boat disqualified from the medal race under RRS 5 or 69. This changes RRS A2.

19.2 RRS A4.1 is changed so that the points for the medal race are doubled, and RRS A4.2 is changed so that the scores are based on the number of boats assigned to compete in the medal race.

19.3 For boats assigned to compete in the medal race, ties in the regatta score shall be broken by their score in the medal race. This changes RRS A8. If the tie in the regatta score remains, it will be broken by applying RRS A8 to the opening-series scores.

19.4 A boat assigned to compete in the medal race shall make a genuine effort to start, sail the course and finish. The penalty for a breach of this instruction will be ranking the boat fifth in the regatta. If there are two such boats, they will be ranked fourth and fifth in the regatta, in order of their opening-series scores, and so on. This changes RRS A2.

## **SAFETY REGULATIONS**

20.1 Check-In: All boats shall check-in on arrival at the racing area by closely passing the race committee signal boat on port tack. Boats not leaving the harbour for any of the day's racing shall so inform the race office.

20.2 A boat that retires from a race shall notify the race committee as soon as possible. The boat shall complete a retirement declaration form at the protest desk upon returning ashore.

## **EQUIPMENT AND MEASUREMENT**

21.1 Boats are required to comply with the 2011 Pan-American Games Equipment Inspection Regulations.

## **OFFICIAL BOATS**

22.1 Official boats will be marked as follows:

<b>Flag</b>	<b>Category</b>
black letter "J" on white background	Jury and umpire
white letters "CR" on blue background	Race committee
black letters "PRO" on white background	Principal race officer
black letter "M" on white background	Equipment inspection committee
black letters "VIP" on white background	VIP
red letters "SOS" on white background	Rescue
red cross on white background	First aid
white letter "P" on green background	Press, photo
black letters "TD" on white background	ISAF technical delegate

## **SUPPORT BOATS**

23.1 Team leaders, coaches and other support personnel are required to comply with the 2011 Pan-American Games Sailing Competition Coach Boat Regulations.

## **TRASH DISPOSAL**

24.1 Boats shall not put trash in the water. Trash may be placed aboard support, jury, equipment inspection and race committee boats.

## **BERTHING**

25.1 During the event, boats shall be kept in their assigned places in the boat park or harbor.



## **HAUL-OUT RESTRICTIONS**

26.1 Boats assigned places in the harbor shall not be hauled out during the regatta, except with and according to the terms of prior written permission given by the Race Committee.

## **DIVING EQUIPMENT AND PLASTIC POOLS**

27.1 Underwater breathing apparatus and plastic pools or their equivalent shall not be used around keelboats between the preparatory signal of the first race and the end of the regatta.

## **RADIO COMMUNICATION**

28.1 Except in an emergency or when using equipment provided by the race committee, a boat shall neither make nor receive radio transmissions, text messages or cellular phone calls while racing.

## **PRIZES**

29.1 Medals will be awarded to the top three boats in each event. Diplomas will be awarded to the fourth to eighth finishers in each event.

## **INSURANCE**

30.1 Each participating team shall present a valid insurance certificate showing proof of third-party liability coverage of at least US\$100,000 or equivalent per incident.

## **DISCLAIMER OF LIABILITY**

31.1 Athletes participate in the regatta entirely at their own risk, as per RRS 4, Decision to Race. The organizing authority will not accept any liability for material damage or personal injury or death sustained in conjunction with or prior to, during, or after the regatta.

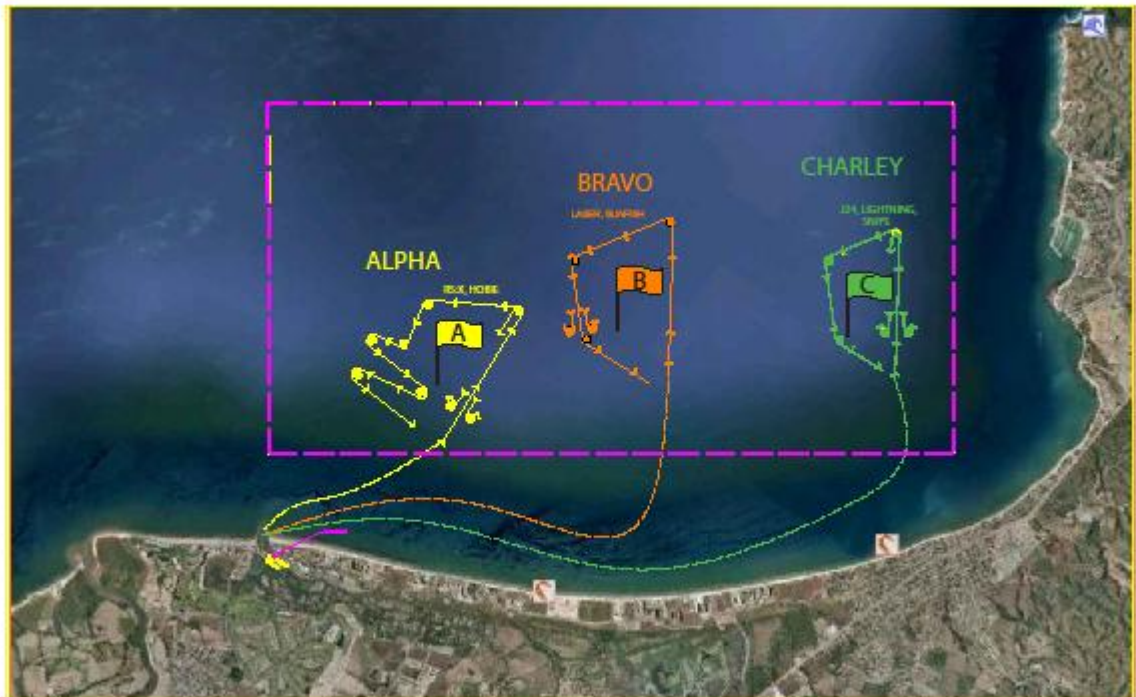
## **MEDIA RIGHTS**

32.1 By participating in the 2011 Pan-American Games Regatta an athlete automatically grants to the organizing authority and its sponsors the right in perpetuity to make, use and show, from time to time, at their discretion, any motion pictures and live, taped or filmed television and other reproductions of him or her during the period of competition without compensation.

32.2 The three highest-ranked competitors as well as the winners of individual races may be required to attend a media press conference each day.

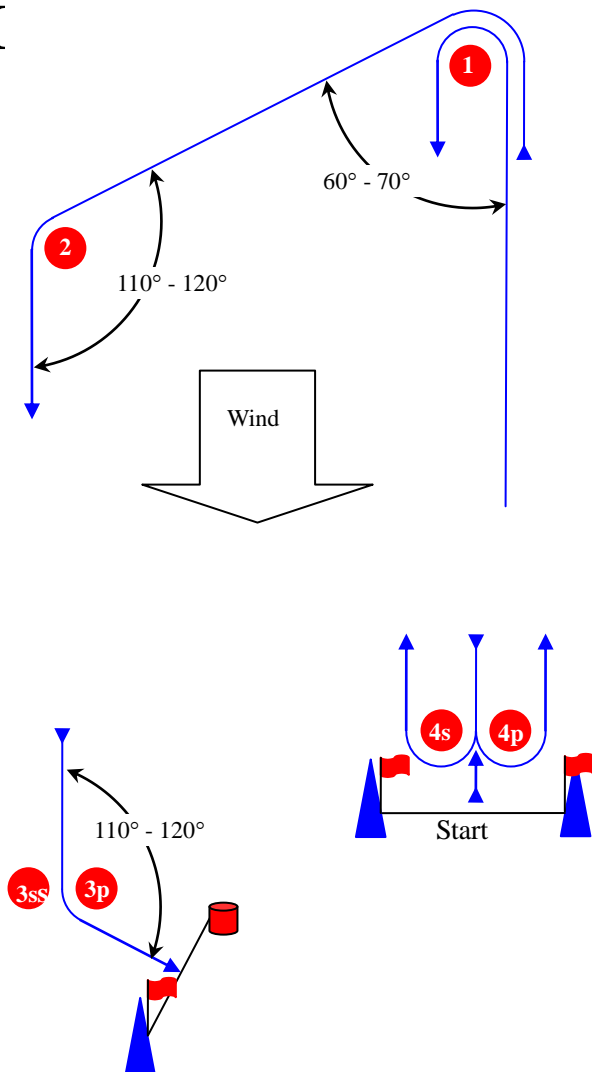
32.3 Competitors may be required to make themselves available for interviews throughout the regatta.

ATTACHMENT A



## ATTACHMENT B, COURSE ILLUSTRATION

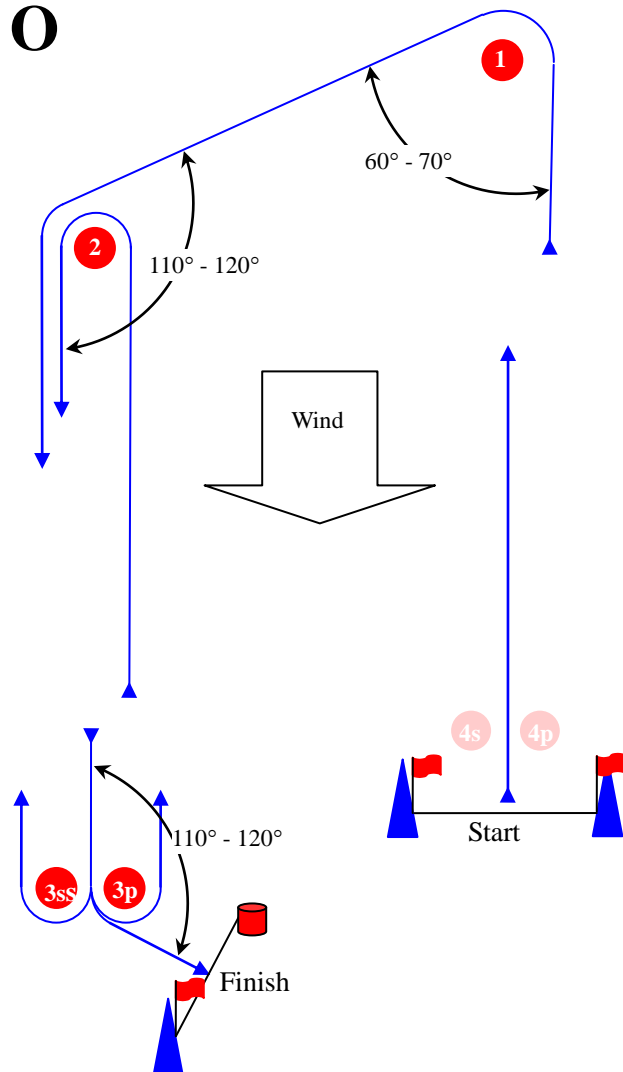
# I



**Course: Inner Trapezoid**

Signal	Mark Rounding Order
<b>I2</b>	Start – 1 – 4s/4p – 1 – 2 – 3p – Finish
<b>I3</b>	Start – 1 – 4s/4p – 1 – 4s/4p – 1 – 2 – 3p – Finish
<b>I4</b>	Start – 1 – 4s/4p – 1 – 4s/4p – 1 – 4s/4p – 1 – 2 – 3p – Finish

# O

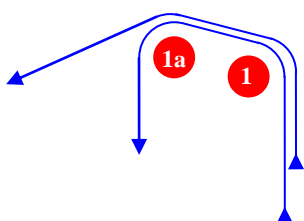


**Course: Outer Trapezoid**

Signal	Mark Rounding Order
<b>O2</b>	Start – 1 – 2 – 3s/3p – 2 – 3p – Finish
<b>O3</b>	Start – 1 – 2 – 3s/3p – 2 – 3s/3p – 2 – 3p – Finish
<b>O4</b>	Start – 1 – 2 – 3s/3p – 2 – 3s/3p – 2 – 3s/3p – 2 – 3p – Finish

# IA

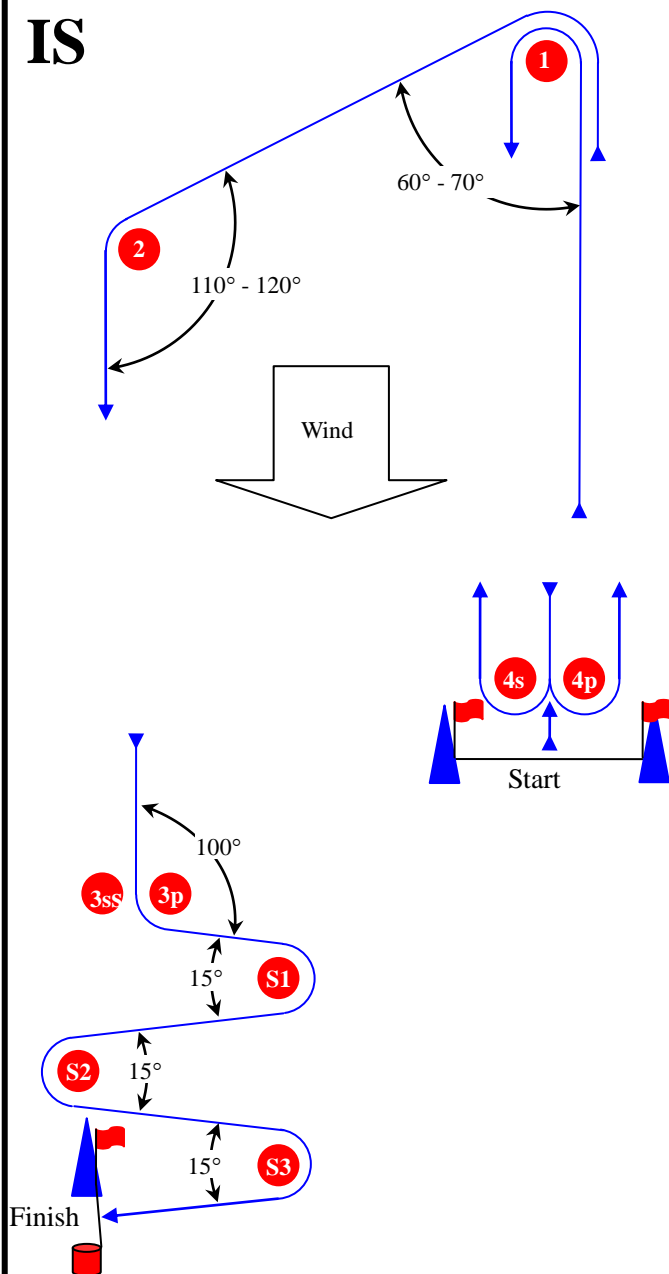
**Course: Same as course I except with offset mark 1a**



Signal	Mark Rounding Order
<b>IA2</b>	Start – 1 – 1a – 4s/4p – 1 – 1a – 2 – 3p – Finish
<b>IA3</b>	Start – 1 – 1a – 4s/4p – 1 – 1a – 4s/4p – 1 – 1a – 2 – 3p – Finish
<b>IA4</b>	Start – 1 – 1a – 4s/4p – 1 – 1a – 4s/4p – 1 – 1a – 4s/4p – 1 – 1a – 2 – 3p – Finish

# ATTACHMENT B, COURSE ILLUSTRATION

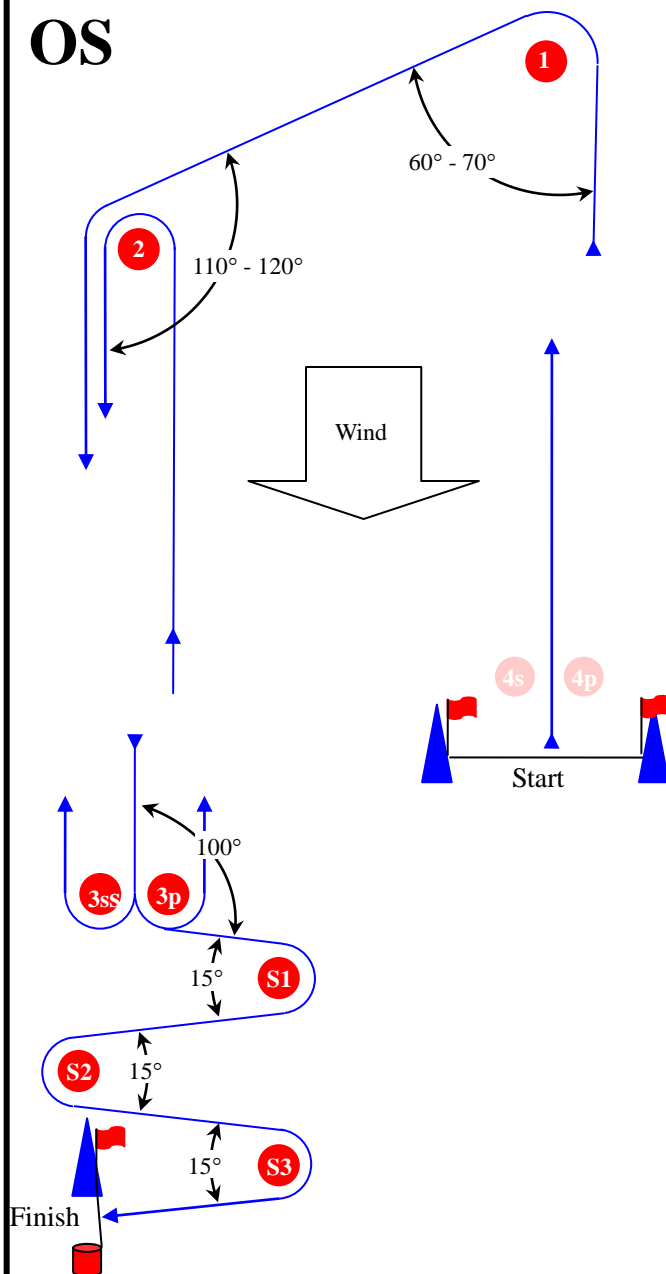
## IS



**Course: Inner trapezoid slalom finish**

Signal	Mark Rounding Order
<b>IS2</b>	Start – 1 – 4s/4p – 1 – 2 – 3p – S1 – S2 – S3 – Finish
<b>IS3</b>	Start – 1 – 4s/4p – 1 – 4s/4p – 1 – 2 – 3p – S1 – S2 – S3 – Finish
<b>IS4</b>	Start – 1 – 4s/4p – 1 – 4s/4p – 1 – 4s/4p – 1 – 2 – 3p – S1 – S2 – S3 – Finish

## OS

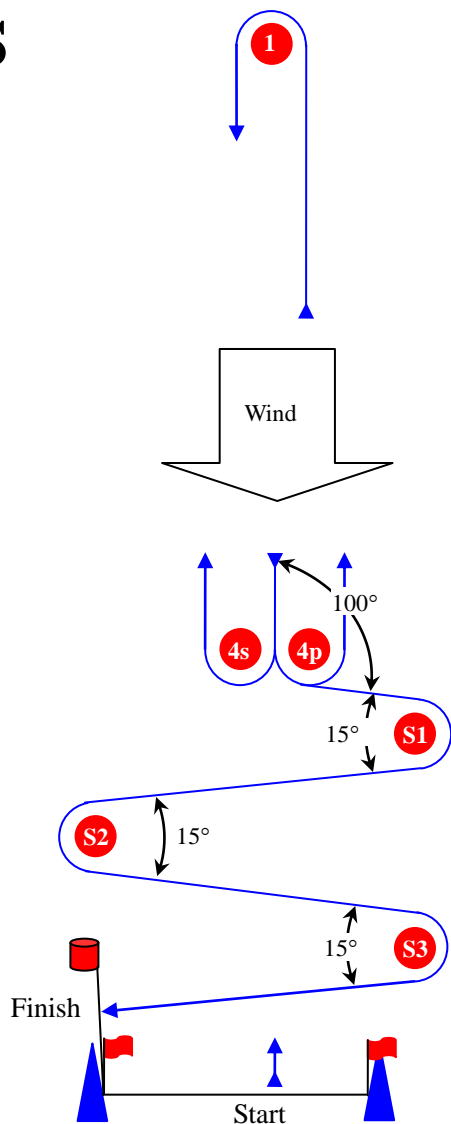


**Course: Outer trapezoid slalom finish**

Signal	Mark Rounding Order
<b>OS2</b>	Start – 1 – 2 – 3s/3p – 2 – 3p – S1 – S2 – S3 – Finish
<b>OS3</b>	Start – 1 – 2 – 3s/3p – 2 – 3s/3p – 2 – 3p – S1 – S2 – S3 – Finish
<b>OS4</b>	Start – 1 – 2 – 3s/3p – 2 – 3s/3p – 2 – 3s/3p – 2 – 3p – S1 – S2 – S3 – Finish

# ATTACHMENT B, COURSE ILLUSTRATION

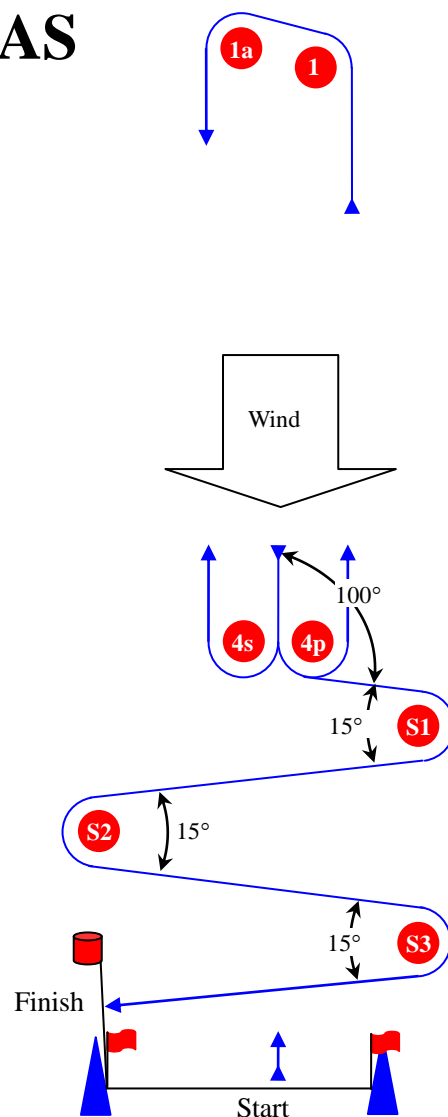
## LS



Course: Windward Leeward slalom finish

Signal	Mark Rounding Order
<b>LS2</b>	Start – 1 – 4s/4p – 1 – S1 – S2 – S3 – Finish
<b>LS3</b>	Start – 1 – 4s/4p – 1 – 4s/4p – 1 – S1 – S2 – S3 – Finish
<b>LS4</b>	Start – 1 – 4s/4p – 1 – 4s/4p – 1 – 4s/4p – 1 – S1 – S2 – S3 – Finish

## LAS

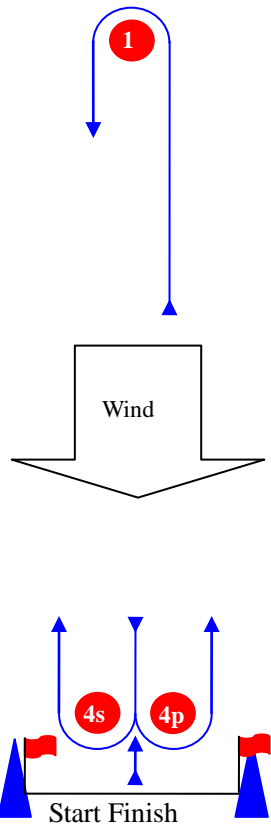


Course: Windward leeward with offset mark and slalom finish

Signal	Mark Rounding Order
<b>LAS2</b>	Start – 1 – 1a – 4s/4p – 1 – 1a – S1 – S2 – S3 – Finish
<b>LAS3</b>	Start – 1 – 1a – 4s/4p – 1 – 1a – 4s/4p – 1 – 1a – S1 – S2 – S3 – Finish
<b>LAS4</b>	Start – 1 – 4s/4p – 1 – 4s/4p – 1 – 4s/4p – 1 – S1 – S2 – S3 – Finish

ATTACHMENT B, COURSE ILLUSTRATION

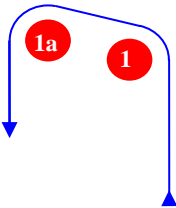
L



Course: Leeward finish

Signal	Mark Rounding Order
L2	Start – 1 – 4s/4p – 1 – Finish
L3	Start – 1 – 4s/4p – 1 – 4s/4p – 1 – Finish
L4	Start – 1 – 4s/4p – 1 – 4s/4p – 1 – 4s/4p – 1 – Finish

LA



Course: Windward/leeward with offset mark 1a

Signal	Mark Rounding Order
LA2	Start – 1 – 1a – 4s/4p – 1 – 1a – Finish
LA3	Start – 1 – 1a – 4s/4p – 1 – 1a – 4s/4p – 1 – 1a – Finish
LA4	Start – 1 – 1a – 4s/4p – 1 – 1a – 4s/4p – 1 – 1a – 4s/4p – 1 – 1a – Finish